

BARKEN INC.

# AUDITION MANAGER

DATA MANAGEMENT FOR  
LARGE AUDITIONS

Audition Manager provides the perfect solution for handling the data for large auditions. Submission of data is automatic from initial entry to final judging. Use of the Chatsworth Optical Mark Reader makes tallying results painless and error free.

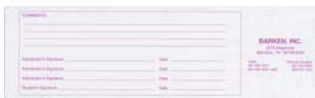
Give us a call today and ask for Barry Lumpkin. He'll be glad to chat with you about the program.

- Data gathering via keyboard, email or ftp.
- Fast tallying with Chatsworth Optical Mark Reader.
- Up to five judges. Optional drop high/low.
- Extensive error checking.
- Simple, effective report generators.
- Mac/PC compatible.

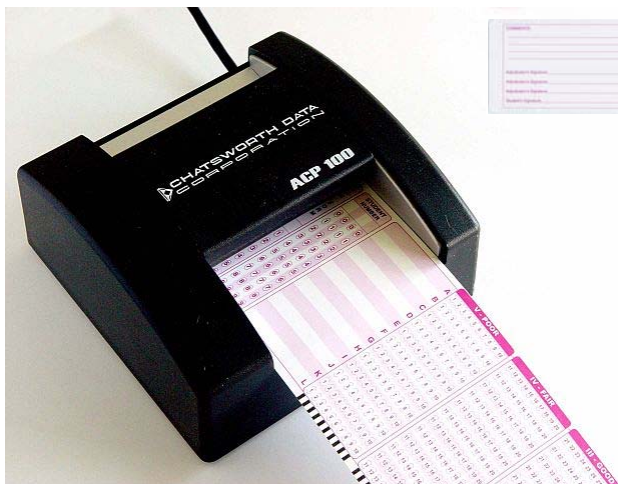
*Audition Manager software allows you to easily register schools and students for any large audition... Choir, Band, Orchestra, or any other group where accurate scoring is imperative.*



NAME	SCORE	...
...	...	...
...	...	...



...	...
...	...



**TO CONTACT US:**

Barry Lumpkin  
3242 Park Avenue  
Memphis, Tennessee 38111  
Memphis: 901-454-0842  
Toll free: 800-579-1264  
Email: [barrylum@bellsouth.net](mailto:barrylum@bellsouth.net)

## **THE STEPS ARE EASY...**

### **Setup...**

Tell the computer the names of the performing groups, what categories will be judged, who will be judging the different categories, and what type of scoring is needed.

### **Student / School Registration...**

Here you have two choices...

- 1) Type in all the names and student data, or
- 2) Use *Remote Registration* which allows directors to register their students from their office desk so that data can be retrieved automatically.

### **Judge...**

Again, there are two choices...

- 1) Keyboard the students score, or
- 2) Use the Chatsworth Card reader for fast, accurate scoring.

### **Print the Results...**

Print routines are already set up for you. Just seconds after the last student's score is completed, the results can be printed and posted.